

# AL'S 2250-750 Flout (ALS 3000 S FLOUT)

Model 2250-750 Septic -Siphon

2257 Gal. Septic 129 Gal. Siphon dose  
1081 G.P.D. when used as a septic pump tank  
based on a 3 year service interval

Note : Siphon dose can b changed by adding  
displacement blocks or using a different size  
drawdown on the flout

Depth of bury = 96"

#### DIMENSIONS:

Length: 14' 0"

Width: 8' 6"

Height: 70"

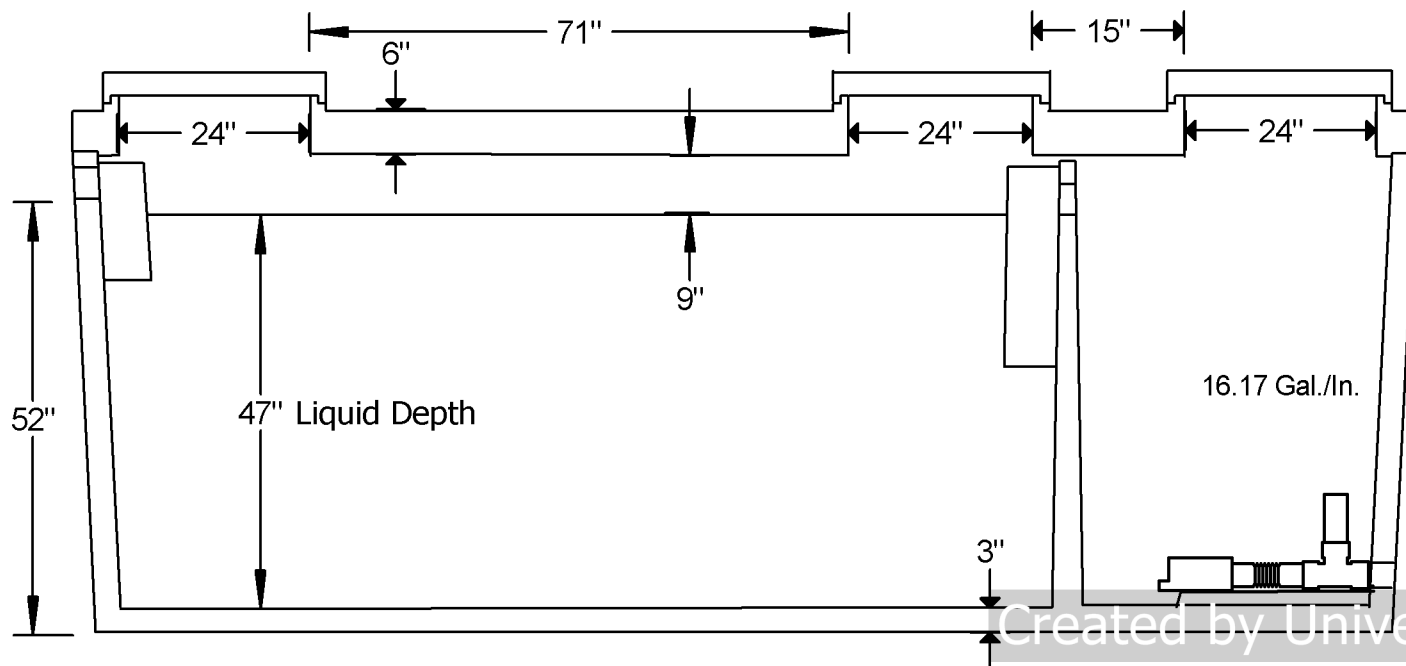
Below Inlet: 52"

Below Outlet: 50"

Tank Weight: 12912 lbs.

Cover Weight: 8925 lbs.

Total Weight: 21837 lbs.



# AL'S 2250-750

3" Flout Siphon with 8" drawdown

Model 2250-750 Septic -Siphon

**AL'S Concrete Products, Inc.**  
800 Townhall Road . La Crescent, MN 55947  
507-895-4509 1-800-982-9263 507-895-6805 Fax  
www.alconcreteproducts.com