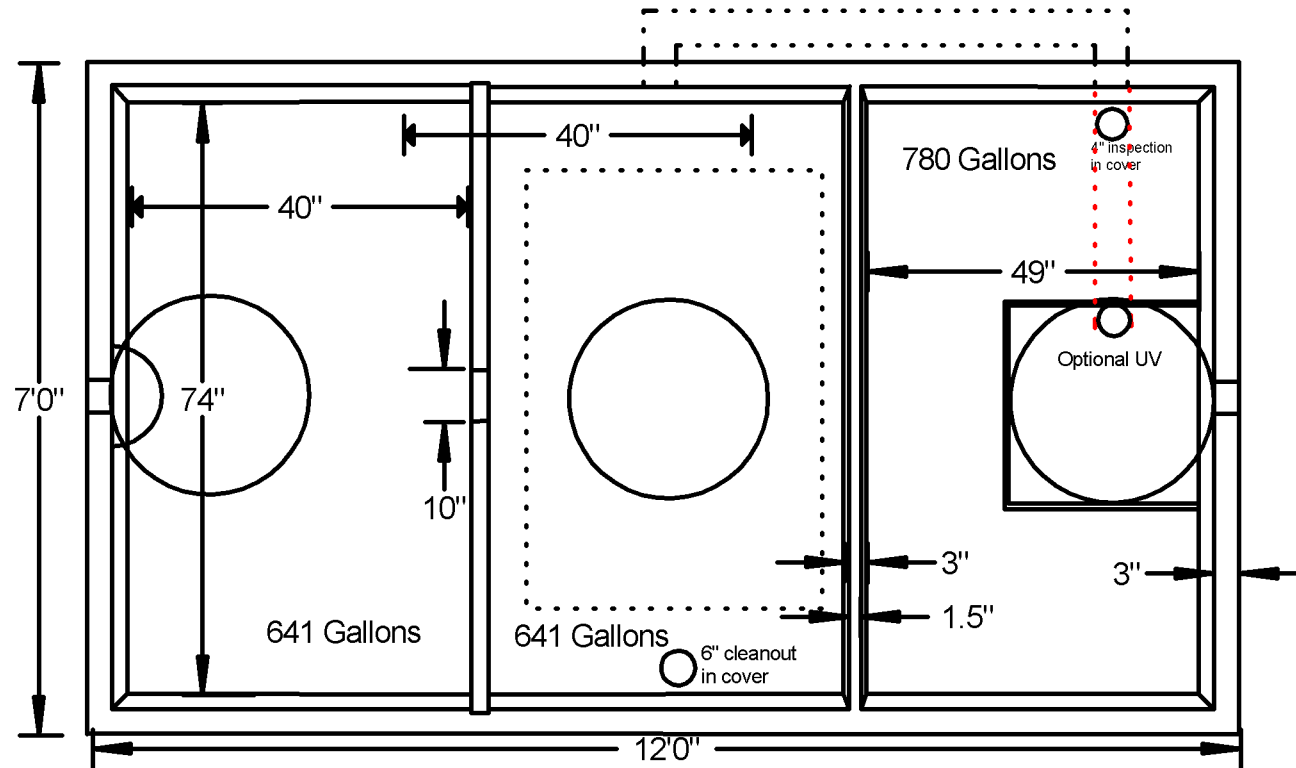


ALS 0.5 FAST



3 compartment septic-FAST-pump

2063 gallon capacity

DIMENSIONS:

Length: 12'0"

Width: 7'0"

Height: 69"

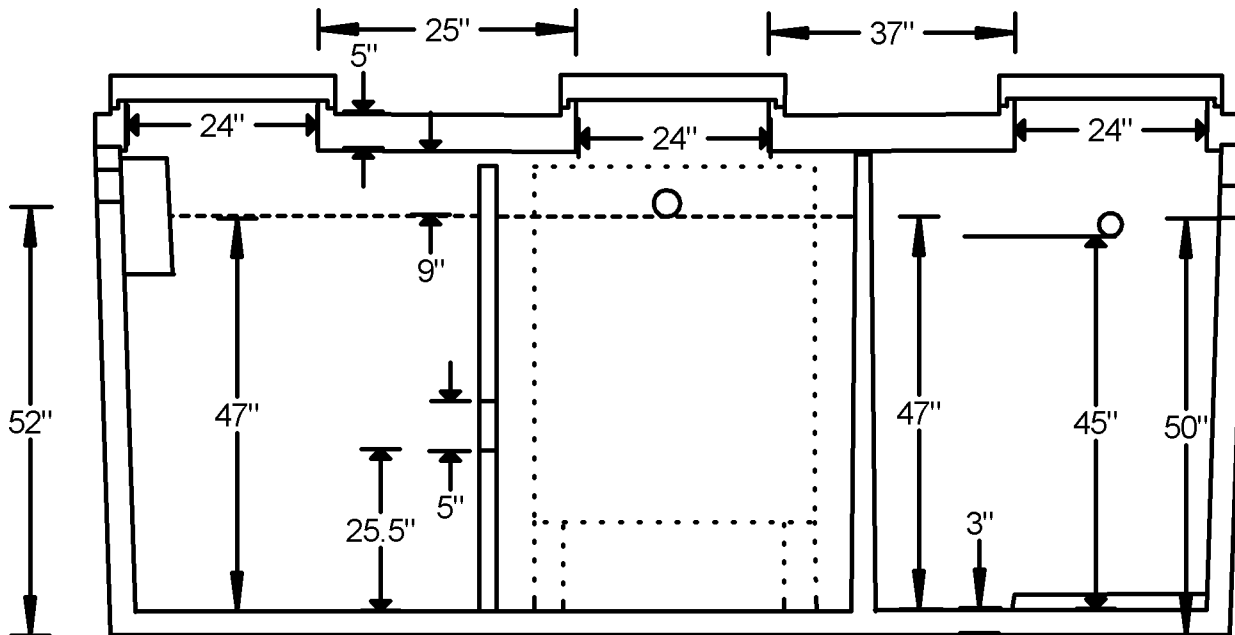
Below Inlet: 52"

Below Outlet: 50"

Tank Weight: 10712 lbs.

Cover Weight: 5292 lbs.

Total Weight: 16004 lbs.



AL'S Concrete Products, Inc.
 800 Townhall Road . La Crescent, MN 55947

507-895-4509

1-800-982-9263

507-895-6805 Fax