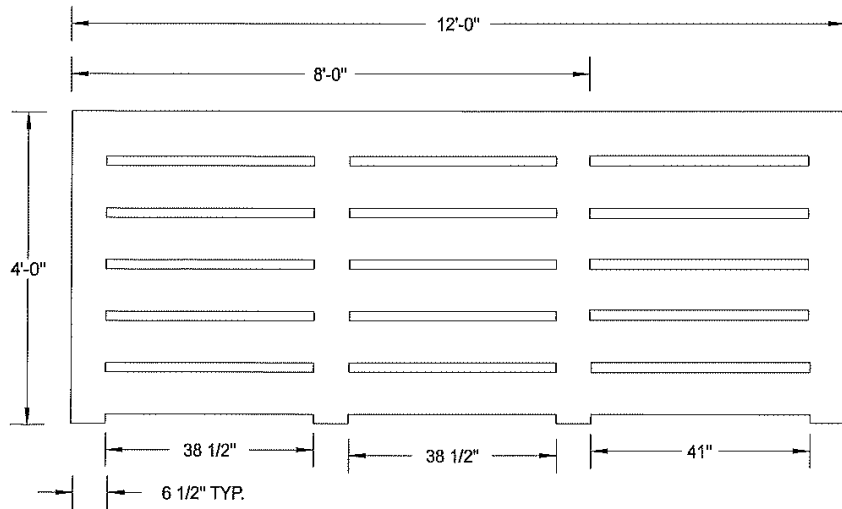
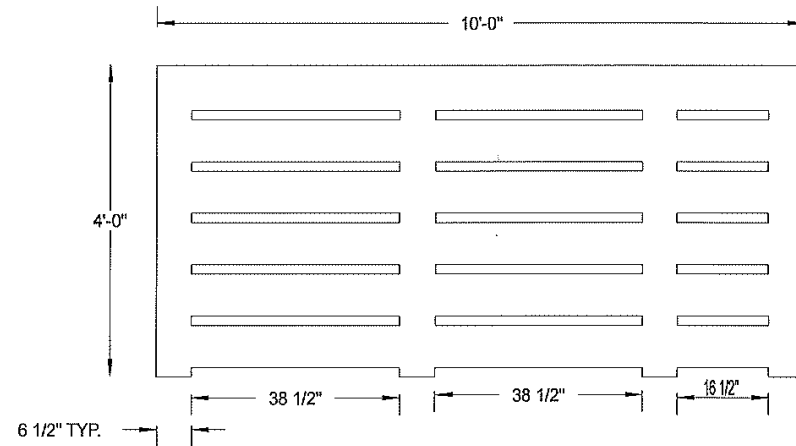
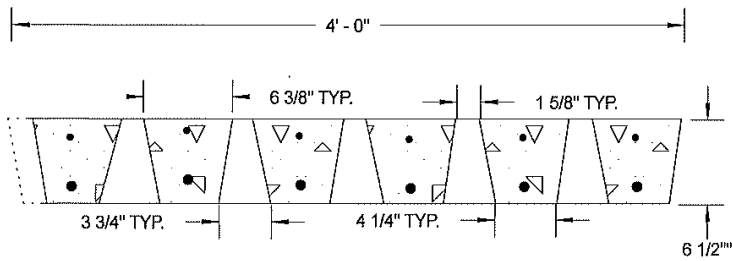


ALS 4' Wide x 6 1/2" Thick Standard Cattle Slat



7000 PSI Concrete Mix
 2 layers of Rebar
 Light Broom Finish
 Panel Weight = 56 lbs per square foot



AL'S Concrete Products, Inc.
 800 Townhall Road, La Crescent, MN 55947
 507-895-4509 1-800-982-9263 507-895-6805 Fax
www.alsconcreteproducts.com